



RETAIL UNIT FOR LEASE

9325 156 Street NW, Edmonton, AB

RE/MAX
COMMERCIAL
RE/MAX EXCELLENCE
COMMERCIAL DIVISION

Dale James
Associate Broker, Investments
E: dale.james@commercialveg.ca
D: 780.341.2034

Humaira Naikyar
Senior Associate, Investments
E: humaira.naikyar@commercialveg.ca
D: 780.341.2035

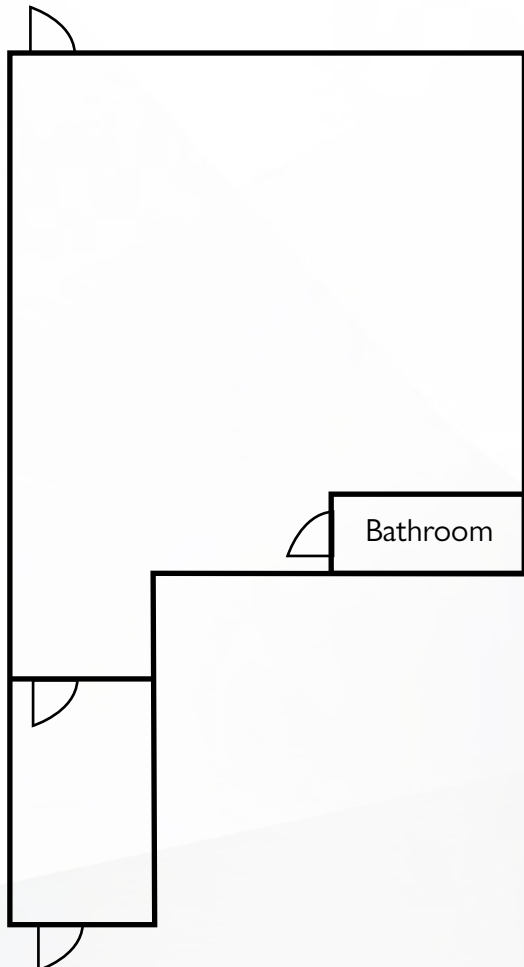
HIGHLIGHTS

Located in the thriving community of Sherwood, this 1,090 SF +/- unit is in a newly built retail centre. The unit has large West facing windows that let in ample sunlight, exposed metal beams on the ceiling, and durable vinyl planking on the floors.

PROPERTY DETAILS

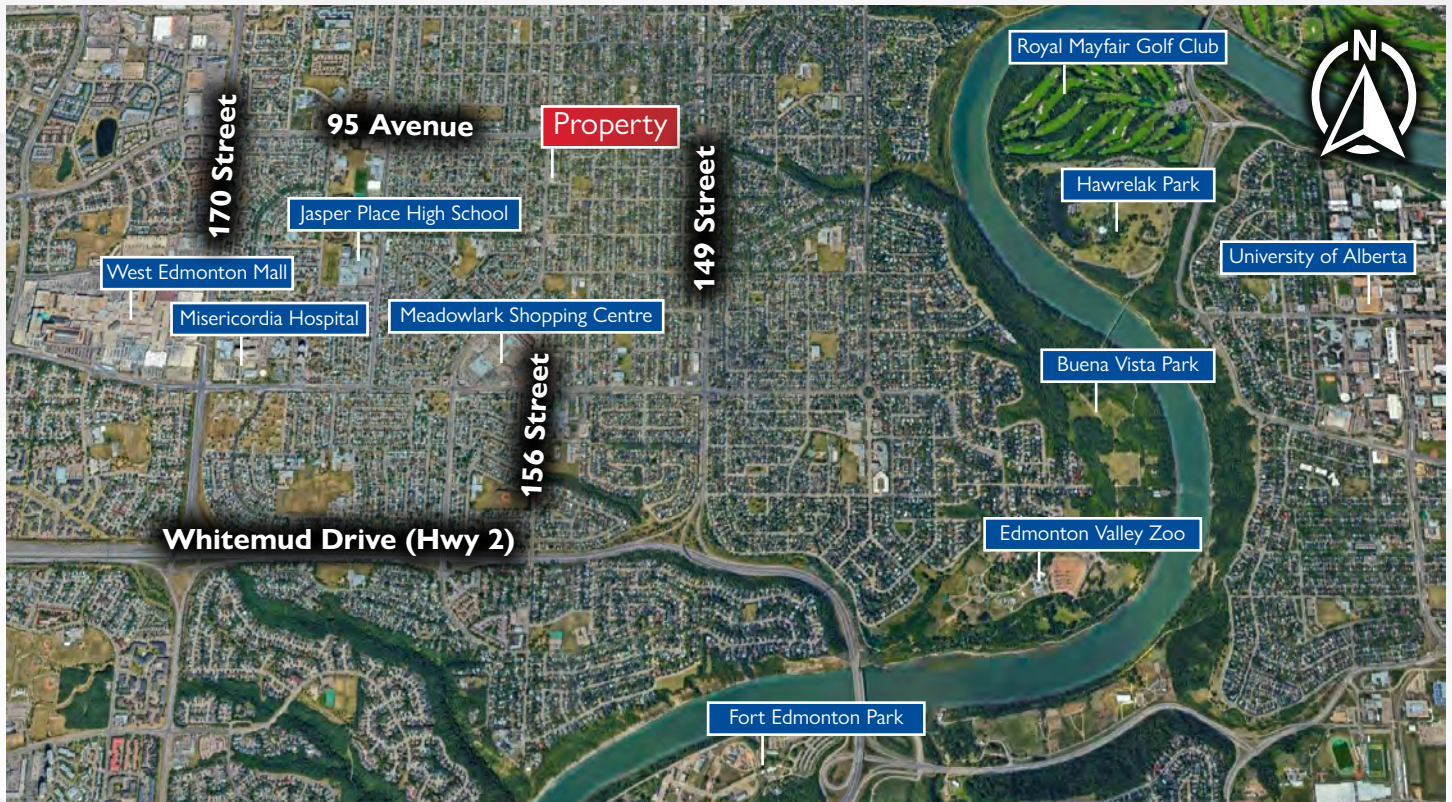
Address:	9325 - 156 Street NW Edmonton, AB
Net Rent:	Market
Operating Costs:	\$15.00 PSF
Legal Description:	Lot 64, Block 13, Plan 1822765
Unit Size:	+/- 1,090 SF
Year Built:	2019
Zoning:	MU - Mixed Use Zone
Parking:	Surface & Street

FLOOR PLAN



THE LOCATION

Located within the Sherwood neighborhood, the unit is conveniently located along 156 street, a major artery that connects the neighbourhood to other parts of the city. This makes it easily accessible from Downtown, West Edmonton, and the other heavy populated areas surrounding Sherwood.





CONTACT

Dale James

Associate Broker, Investments
E: dale.james@commercialyeg.ca
D: 780.341.2034

Humaira Naikyar

Senior Associate, Investments
E: humaira.naikyar@commercialyeg.ca
D: 780.341.2035

RE/MAX
COMMERCIAL[®]
RE/MAX EXCELLENCE
COMMERCIAL DIVISION

Disclaimer

This brochure is for general information purposes only. No warranty or representation, expressed or implied, is made as to the accuracy of the information contained herein, and same is submitted subject to errors, omissions, change of price, rental or other conditions, withdrawal without notice, and to any specific listing condition, imposed by the principals. Interested parties shall verify all information provided herein and the Vendor reserves the right to discontinue any negotiations or discussions of the Property, at the Vendor's discretion prior to entering into a contract. RE/MAX Excellence Commercial Division shall not be held liable for any loss and damages arising from information provided in this brochure.