

BISON CROSSING DEVELOPMENT FOR SALE

HIGH LEVEL, ALBERTA

FOR SALE

**SELLER FINANCING:
WILL CONSIDER TRADE!**



PROPERTY HIGHLIGHTS

Bison Crossing - Zoned C3 - prime property surrounded by Tim Hortons, Canadian Tire, Home Hardware, Future Hotel Site; and 3 other lots sold last summer for development. The Town of High Level is located in the heart of beautiful Northwest Alberta known for its abundant natural resources including oil & gas, forestry and agriculture. High Level is the central service centre of the northwest and features a commercial airport with connections to Edmonton, excellent community amenities such as a swimming pool, hockey arena, golf course and much more!

RE/MAX
COMMERCIAL

RE/MAX EXCELLENCE
COMMERCIAL DIVISION

Judith Rimmer

Vice President | Investments-
MultiFamily, Land & Business Sales
E: jrimmer@commercialyeg.ca
D: (780) 405-9333

Nadia Mitchell

Associate
E: nadia.mitchell1000@gmail.com
D: 1(780) 720-5427

#201, 5607 199 Street Edmonton, AB T6M 0M8

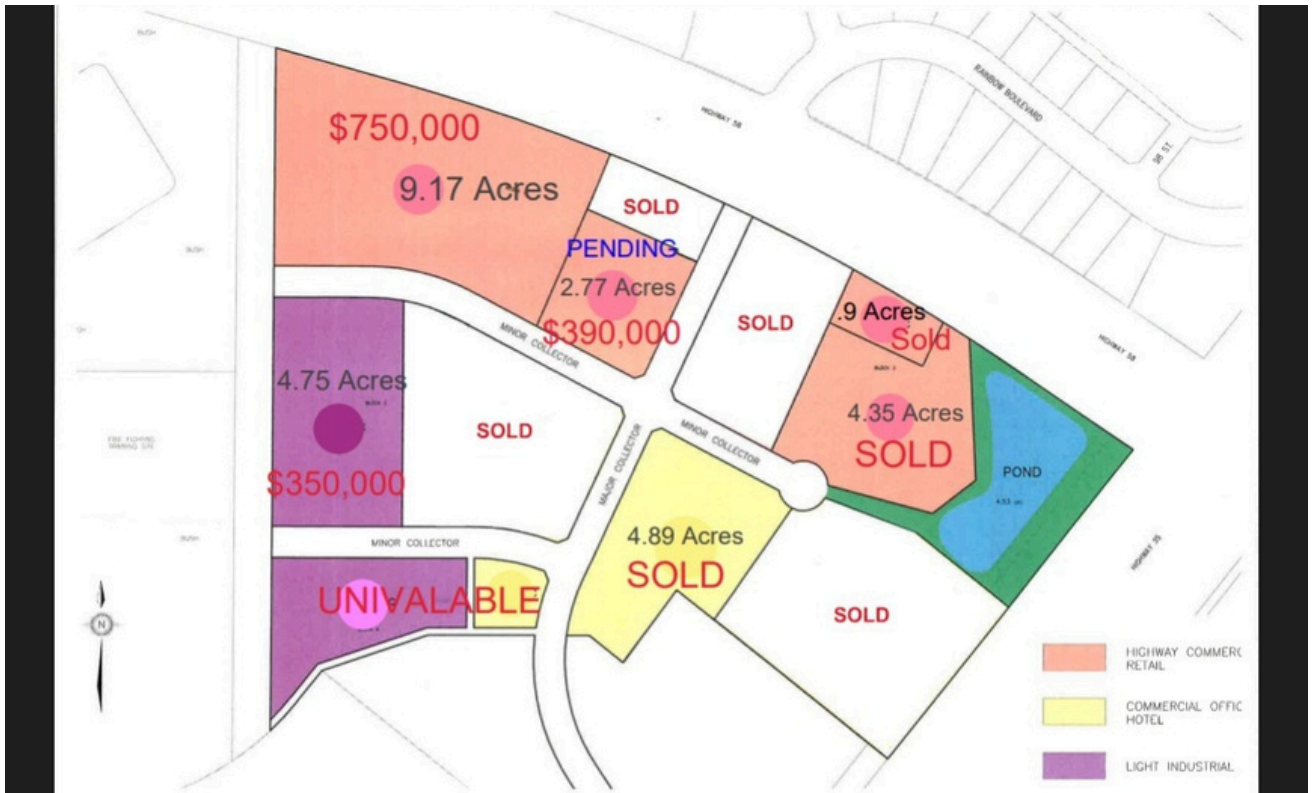
commercialyeg.ca

#1 RE/MAX Commercial Team Worldwide 2017 - 2019*

O:780.429.1200

The information contained herein was obtained from sources deemed to be reliable and is believed to be true; it has not been verified and as such, cannot be warranted nor form a part of any future contract. All measurements should be independently verified by the Purchaser/Tenant. *Based on commercial commissions 2017 - 2019

Map



Total Acres of available lot area: 16.68 Zoned C-3



[Click here for Servicing Information Map PDF](#)
[Link to site](#)



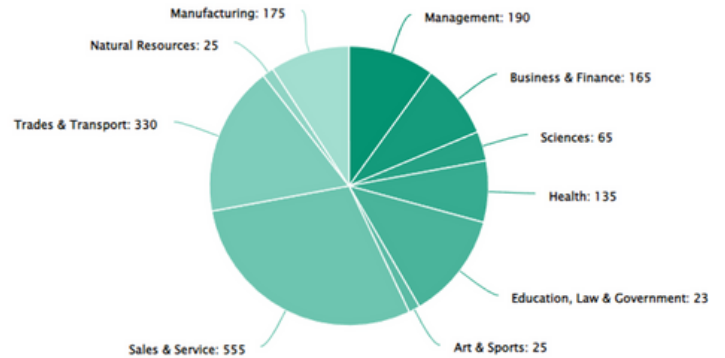
Scan me with your camera!
 Extra servicing info here.



[Click here for Google Earth](#)
[Link to site.](#)

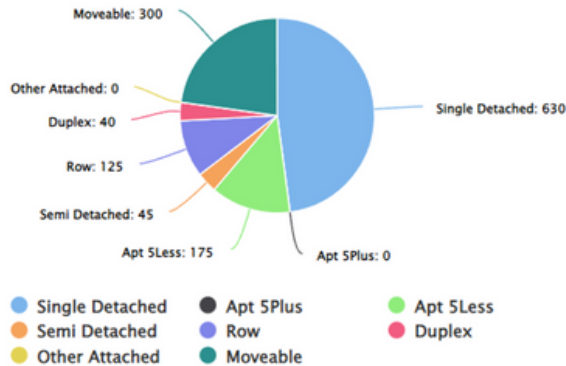
Labour Force by Occupation

Source: Statistics Canada. Census.
 Last Updated: November 2017



Housing type by Structure

Source: Statistics Canada. Census.
 Last Updated: April 2022



Labour Force by Industry

Source: Statistics Canada. Census.
 Last Updated: November 2017

